

COMBI SLIMLINE CARPET INSERT – Commercial Entrance Matting



Specifications & Features		
Recycled aluminium and infill strip construction	Aluminium sections rubber jointed	
European Design	Removable for Easy Clean	
Durable	Rubber Backed	Silent to Walk on
Carpet insert surface finish removes dirt and dust from asphalt and concrete entryways		
Designed for surface mounting where no well has been provided		
Designed for heavy foot traffic and can be installed flat or on a slope ramp		
Supplied with aluminium L angle recess or surface mounted ramp frames		
Proudly NZ made by Burgess Matting & Surfacing (established 1951)		

Maintenance:

Vacuum daily to remove dust and dirt. Periodically remove the rollable Combi-Slimline matting from the matwell and clean with warm water and mild detergent. Rinse thoroughly afterwards. Remove all dirt and debris from the matwell and replace the Combi-Lux when dry. For further cleaning information please refer to the manufacturer.

COMBI-SLIMLINE CARPET INSERTS SPECIFICATION SHEET

The mat shall be a Burgess Combi-Slimline entrance system with _____ carpet inserts

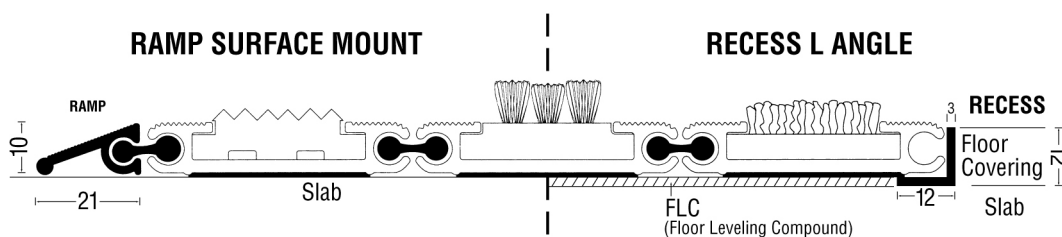
Carpet Insert Colour	
Dimension Left to Right (In mm)	
Front to Back (In mm)	
Frame Type Required (Choose either L angle recess or surface mount ramp frame)	
Size of the above is – (Choose and specify either overall or mat only size)	

Carpet Insert Options 12mm*

6601 Ash Black 6602 Steel Grey 6603 Golden Brown 6604 Arctic Blue 6605 Sea Green

* Profile height, including insert, excluding frame.

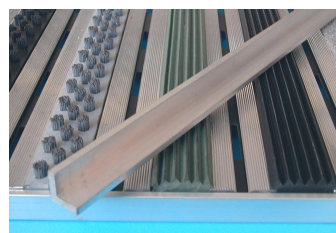
COMBI SLIMLINE FRAME INSTALLATION METHODS



NB: When specifying Combi-Slimline matting to enhance appearance, calculate the front to back dimensions to the nearest full bar in increments of 45mm, allowing 4mm either side for the frame.



Ramp Frame



Recess Frame